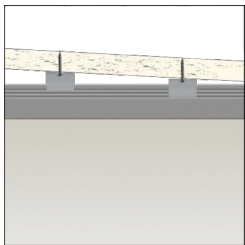
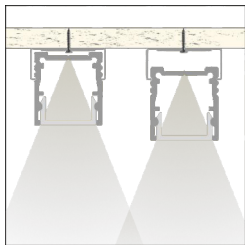
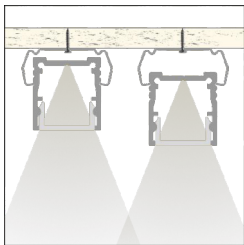
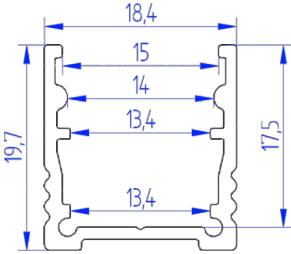
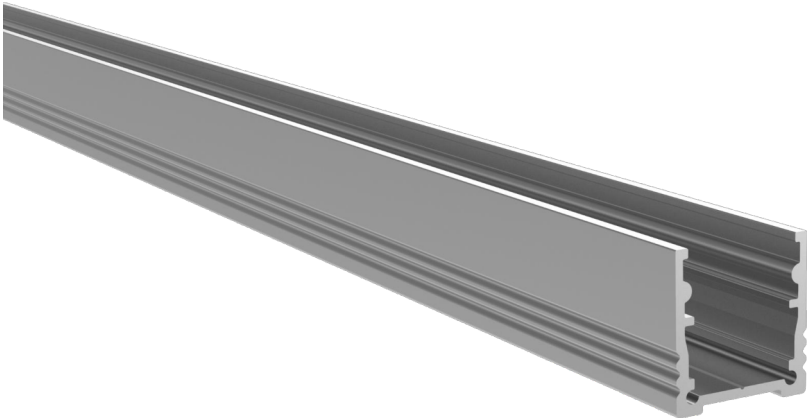


Profile
CD20

Datenblatt | Datasheet



Technische Daten:

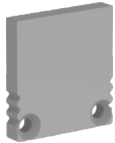
Material: Aluminium eloxiert
 Farbe: Aluminium-silber
 Pulverbeschichtung auf Anfrage
 Breite: 18,4 mm
 Höhe: 19,7 mm

Technical data:

Material: Aluminium anodized
 Colour: silver
 powdercoating on request
 Width: 18.4 mm
 Height: 19.7 mm

Länge length	Gewicht weight	Artikelnummer Art.-No.
1000 mm	216 g	156726
2000 mm	432 g	156727
3000 mm	648 g	156728
5000 mm	1080 g	156729
6000 mm	1296 g	156730

Endkappe (1 Stück): Kunststoff | Plastic
 End cap (1 pc): #156743
 inkl. 2 Schrauben / incl. 2 screws



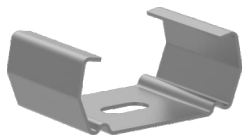
Endkappe (1 Stück): Aluminium
 End cap (1 pc): #156744
 inkl. 2 Schrauben / incl. 2 screws



Montagehalter V2A (2 Stück) #156681
 Mounting bracket V2A (2 pcs):



Montagehalter V2A HRF (2 Stück) : #156682
 Mounting bracket V2A HRF (2 pcs):



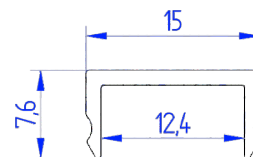
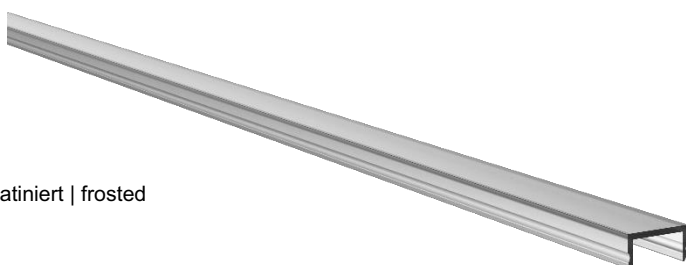
**Cover
CD20**

Datenblatt | Datasheet

Cover opal



Cover satiniert | frosted



Technische Daten:

Material: PMMA
 Farbe: Opal weiß oder satiniert
 Transmission: ~ 60 % (opal) / ~ 80 % (satiniert)
 Breite: 15 mm
 Höhe: 7,6 mm

Technical data:

Material: PMMA
 Colour: opale white or frosted
 Transmission: ~ 60 % (opal) / ~ 80 % (frosted)
 Width: 15 mm
 Height: 7.6 mm

Länge length	Gewicht weight	Artikelnummer Art. - No. opal weiß opal	Artikelnummer Art. - No. satiniert frosted
1000 mm	45 g	156691	156696
2000 mm	90 g	156622	156697
3000 mm	135 g	156693	156698
5000 mm	225 g	156694	156699
6000 mm	270 g	156695	156700