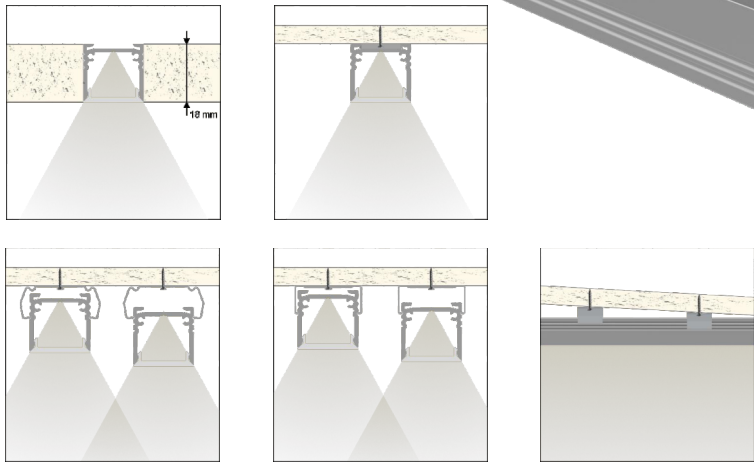
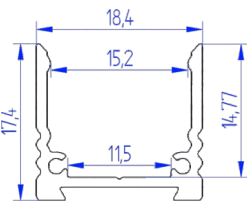
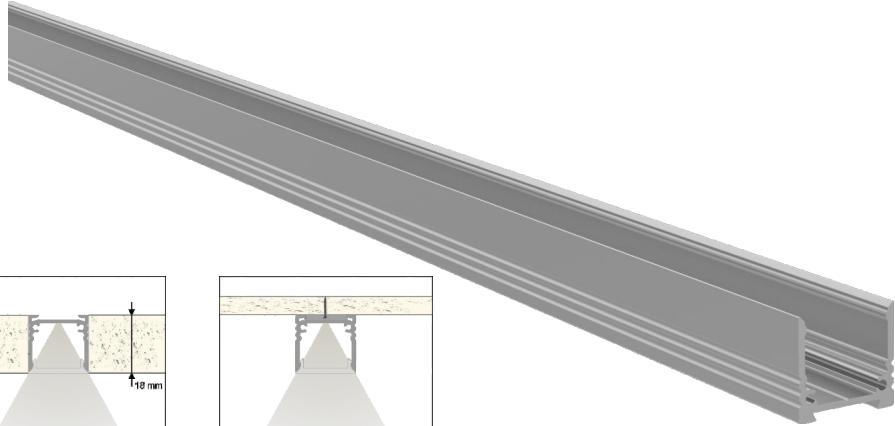


**Profile**  
**CD18**

**Datenblatt | Datasheet**



**Technische Daten:**

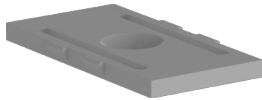
**Technical data:**

Material: Aluminium eloxiert  
 Farbe: Aluminium-silber  
 Pulverbeschichtung auf Anfrage  
 Breite: 18,4 mm  
 Höhe: 17,4 mm

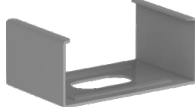
Material: Aluminium anodized  
 Colour: silver  
 powdercoating on request  
 Width: 18.4 mm  
 Height: 17.4 mm

Länge   length	Gewicht   weight	Artikelnummer   Art.-No.
1000 mm	187 g	156706
2000 mm	374 g	156707
3000 mm	561 g	156708
5000 mm	935 g	156709
6000 mm	1122 g	156710

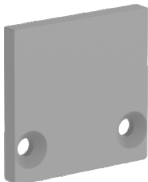
Montageclip (1 Stück): Kunststoff | Plastic  
 mounting clip (1 pc): #156631  
 inkl. 1 Schraube / incl. 1 screw



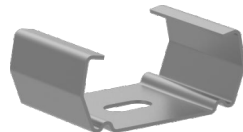
Montagehalter V2A (2 Stück) #156681  
 Mounting bracket V2A (2 pcs):  
 inkl. 2 Schrauben / incl. 2 screws



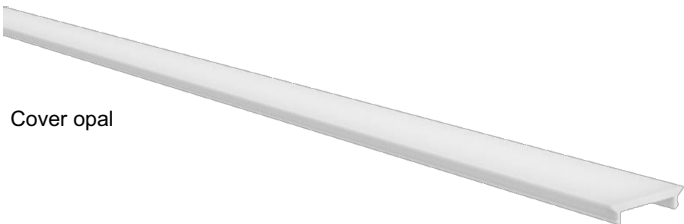
Endkappe (2 Stück): Kunststoff | Plastic  
 End cap (2 pcs): #156722  
 inkl. 4 Schrauben / incl. 4 screws



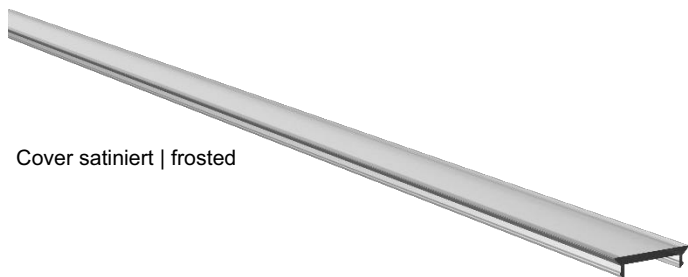
Montagehalter V2A HRF (2 Stück) : #156682  
 Mounting bracket V2A HRF (2 pcs):  
 inkl. 2 Schrauben / incl. 2 screws



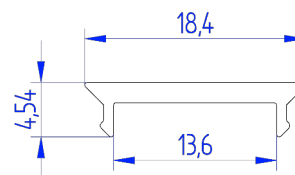
**Cover  
CD18**



Cover opal



Cover satiniert | frosted



**Technische Daten:**

Material: Polycarbonat  
 Farbe: Opal weiß oder satiniert  
 Transmission: ~ 65 % (opal) / ~ 75 % (satiniert)  
 Breite: 18,4 mm  
 Höhe: 4,54 mm

**Technical data:**

Material: Polycarbonate  
 Colour: opale white or frosted  
 Transmission: ~ 65 % (opal) / ~ 75 % (frosted)  
 Width: 18.4 mm  
 Height: 4.54 mm

Länge   length	Gewicht   weight	Artikelnummer   Art. - No. opal weiß   opal	Artikelnummer   Art. - No. satiniert   frosted
1000 mm	43 g	156669	156674
2000 mm	86 g	156670	156675
3000 mm	129 g	156671	156676
5000 mm	215 g	156672	156677
6000 mm	258 g	156673	156678