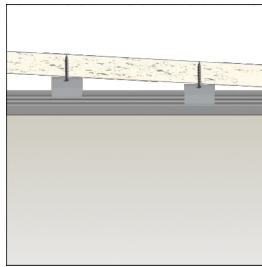
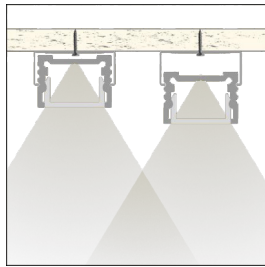
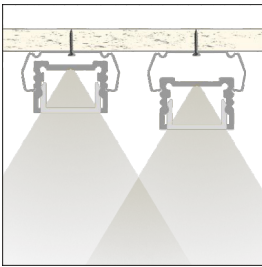
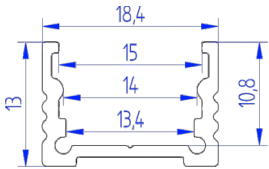
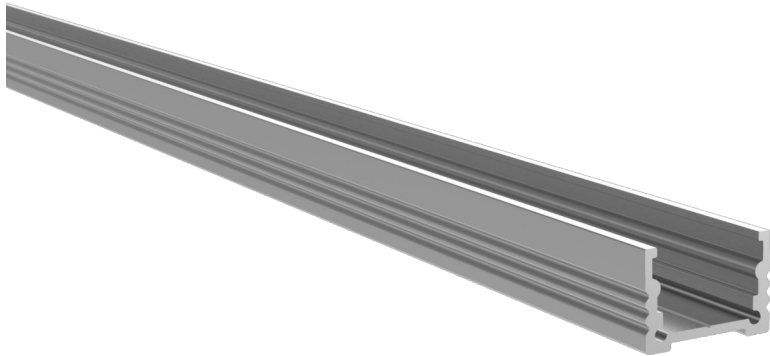


**Profile  
CD13**

**Datenblatt | Datasheet**



**Technische Daten:**

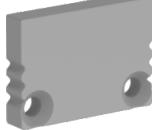
Material: Aluminium eloxiert  
 Farbe: Aluminium-silber  
 Pulverbeschichtung auf Anfrage  
 Breite: 18,4 mm  
 Höhe: 13 mm

**Technical data:**

Material: Aluminium anodized  
 Colour: silver  
 powdercoating on request  
 Width: 18.4 mm  
 Height: 13 mm

Länge   length	Gewicht   weight	Artikelnummer   Art.-No.
1000 mm	164 g	156683
2000 mm	328 g	156686
3000 mm	492 g	156687
5000 mm	820 g	156688
6000 mm	984 g	156689

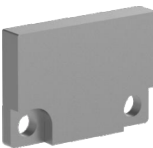
Endkappe (1 Stück): Kunststoff | Plastic  
 End cap (1 pc): #156701  
 inkl. 2 Schrauben / incl. 2 screws



Montagehalter V2A (2 Stück) #156681  
 Mounting bracket V2A (2 pcs):  
 inkl. 2 Schrauben / incl. 2 screws



Endkappe (1 Stück): Aluminium  
 End cap (1 pc): #156702  
 inkl. 2 Schrauben / incl. 2 screws



Montagehalter V2A HRF (2 Stück) : #156682  
 Mounting bracket V2A HRF (2 pcs):  
 inkl. 2 Schrauben / incl. 2 screws



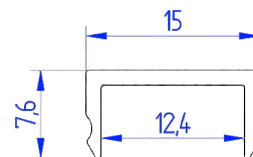
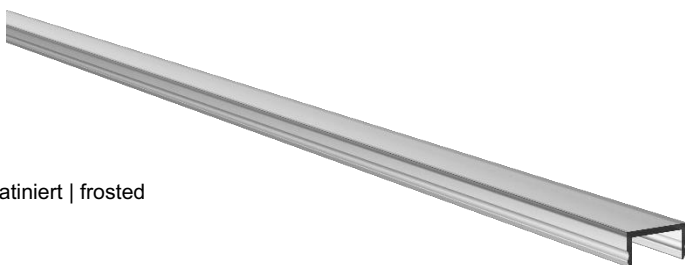
**Cover  
CD13**

**Datenblatt | Datasheet**

Cover opal



Cover satiniert | frosted



**Technische Daten:**

Material: PMMA  
 Farbe: Opal weiß oder satiniert  
 Transmission: ~ 60 % (opal) / ~ 80 % (satiniert)  
 Breite: 15 mm  
 Höhe: 7,6 mm

**Technical data:**

Material: PMMA  
 Colour: opale white or frosted  
 Transmission: ~ 60 % (opal) / ~ 80 % (frosted)  
 Width: 15 mm  
 Height: 7.6 mm

Länge   length	Gewicht   weight	Artikelnummer   Art. - No. opal weiß   opal	Artikelnummer   Art. - No. satiniert   frosted
1000 mm	45 g	156691	156696
2000 mm	90 g	156622	156697
3000 mm	135 g	156693	156698
5000 mm	225 g	156694	156699
6000 mm	270 g	156695	156700