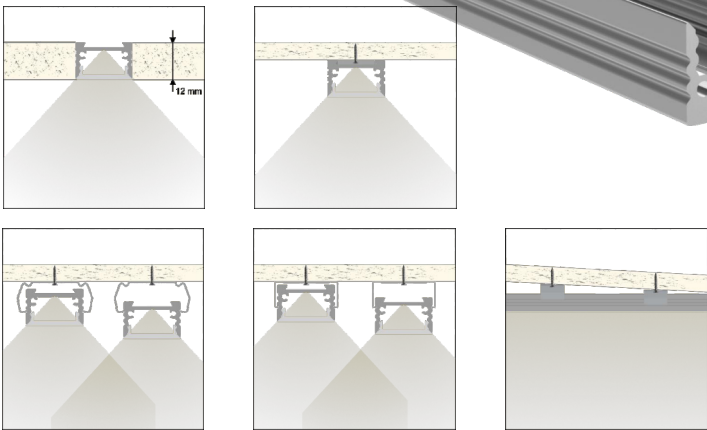
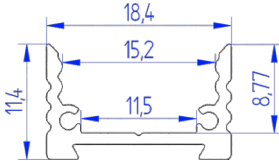
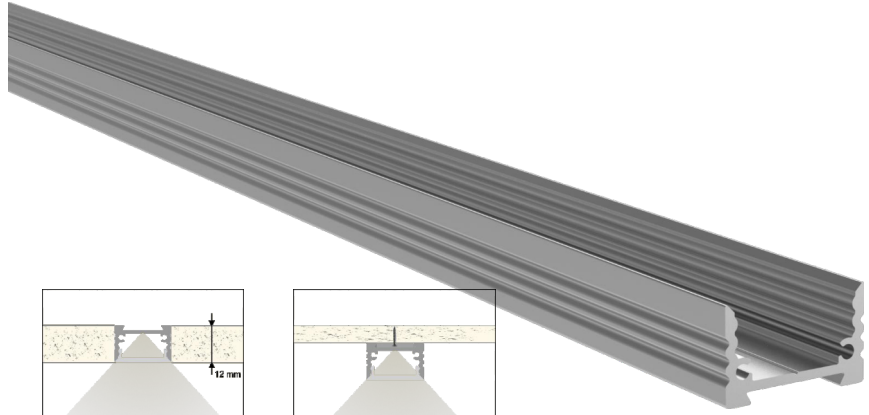


**Profile
CD12**

Datenblatt | Datasheet



Technische Daten:

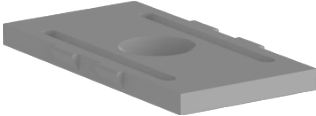
Technical data:

Material: Aluminium eloxiert
 Farbe: Aluminium-silber
 Pulverbeschichtung auf Anfrage
 Breite: 18,4 mm
 Höhe: 11,4 mm

Material: Aluminium anodized
 Colour: silver
 powdercoating on request
 Width: 18.4 mm
 Height: 11.4 mm

Länge length	Gewicht weight	Artikelnummer Art.-No.
1000 mm	148 g	156664
2000 mm	296 g	156665
3000 mm	444 g	156666
5000 mm	740 g	156667
6000 mm	888 g	156668

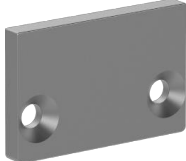
Montageclip (1 Stück): Kunststoff | Plastic
 Mounting clip (1 pc): #156631



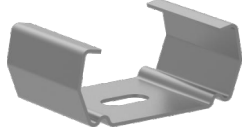
Montagehalter V2A (2 Stück) #156681
 Mounting bracket metal (2 pcs):



Endkappe (2 Stück): Kunststoff | Plastic
 End cap (2 pcs): #156679

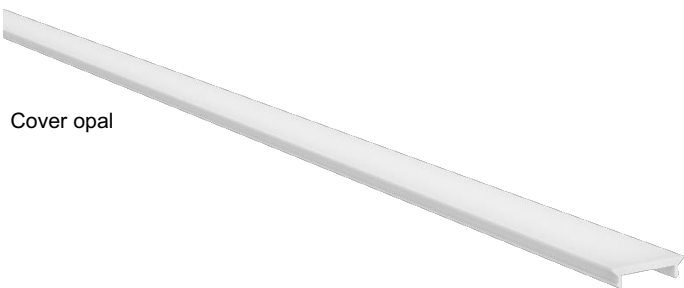


Montagehalter V2A HRF (2 Stück) : #156682
 Mounting bracket V2A HRF (2 pcs):

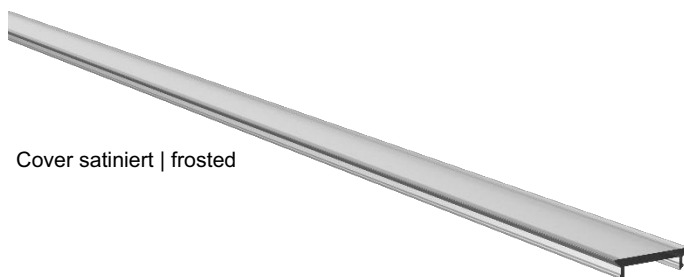


**Cover
CD12**

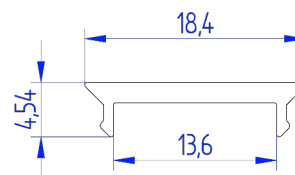
Datenblatt | Datasheet



Cover opal



Cover satiniert | frosted



Technische Daten:

Material: Polycarbonat
 Farbe: Opal weiß oder satiniert
 Transmission: ~ 65 % (opal) / ~ 75 % (satiniert)
 Breite: 18,4 mm
 Höhe: 4,54 mm

Technical data:

Material: Polycarbonate
 Colour: opale white or frosted
 Transmission: ~ 65 % (opal) / ~ 75 % (frosted)
 Width: 18.4 mm
 Height: 4.54 mm

Länge length	Gewicht weight	Artikelnummer Art. - No. opal weiß opal	Artikelnummer Art. - No. satiniert frosted
1000 mm	43 g	156669	156674
2000 mm	86 g	156670	156675
3000 mm	129 g	156671	156676
5000 mm	215 g	156672	156677
6000 mm	258 g	156673	156678