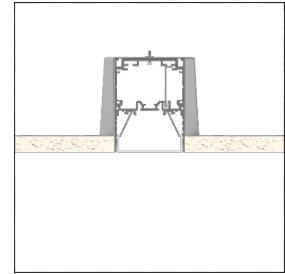
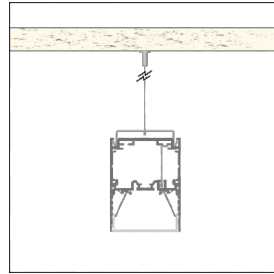
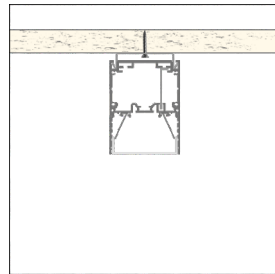
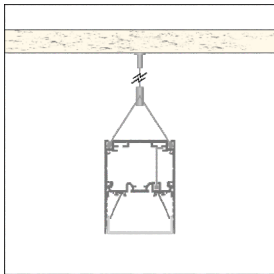
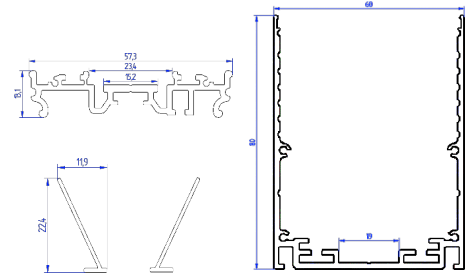
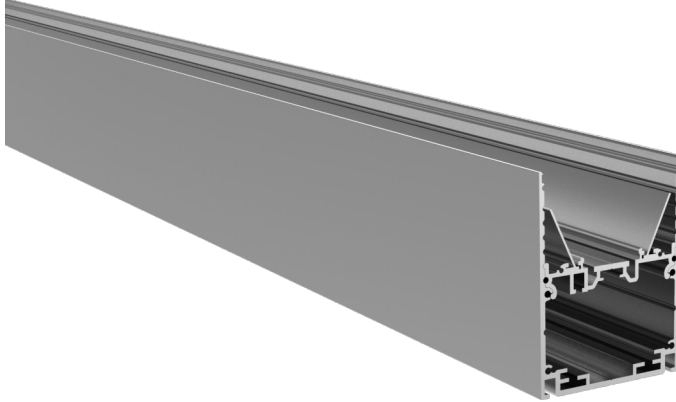


**Profile
KOMBI**

Datenblatt | Datasheet



Technische Daten:

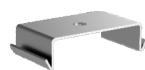
Material	Aluminium eloxiert
Farbe:	Aluminium-silber Pulverbeschichtung auf Anfrage
Breite:	60 mm
Höhe:	80 mm
Länge max.:	6000 mm
Gewicht (Profil):	1330 g m
Gewicht (Einsatz):	560 g m
Gewicht (Reflektor):	70 g m
Artikelnummer (Profil):	#156777
Artikelnummer (Einsatz):	#156778
Artikelnummer (Reflektor):	#156779

Technical data:

Material	Aluminium anodized
Colour:	silver powdercoating on request
Width:	33 mm
Height:	31.8 mm
Length max.:	6000 mm max.
Weight (profile):	1330 g m
Weight (inlet):	560 g m
Weight (reflector):	70 g m
Art. - No. (profile):	#156777
Art. - No. (inlet):	#156778
Art. - No. (reflector):	#156779



Endkappe #156782
End cap Aluminium
(mit Schrauben / incl. screws)



Montageclip #156785
mounting clip V2A
(für Seilabhangung / for wire suspension)



Montageklammer #156784
mounting bracket V2A
(fur Deckenmontage / for ceiling mount)



Seilabhangung #156811
Wire suspension Stahl / steel
(mit / with #156785)



Seilabhangung „Y“ #156782
wire suspension „Y“ Stahl / steel



Sicherheitsseil fur Einsatz #156812
Safety wire for inlet Stahl / steel

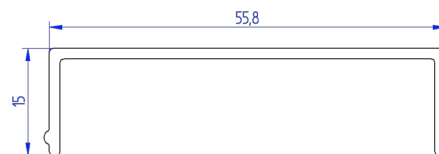


Erdungskabel #156813
Grounding cable

**Cover
KOMBI**

Datenblatt | Datasheet

Cover opal



Cover transparent



Technische Daten:

Material	PMMA
Farbe:	Opal weiß oder transparent
Transmission:	~ 70 % (opal) / ~ 80 % (transparent)
Breite:	55,8 mm
Höhe:	15 mm
Länge max.:	5000 mm
Artikelnummer (opal)	#156780
Artikelnummer (transp.)	#156781

Technical data:

Material	PMMA
Colour:	opale white or transparent
Transmission:	~ 70 % (opal) / ~ 80 % (transparent)
Width:	55.8 mm
Height:	15 mm
Length max.:	5000 mm
Art.-No. (opal)	#156780
Art.-No. (transp.)	#156781